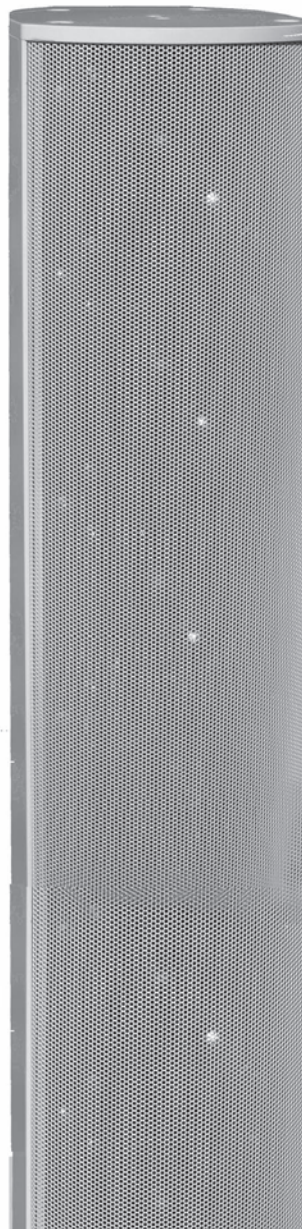
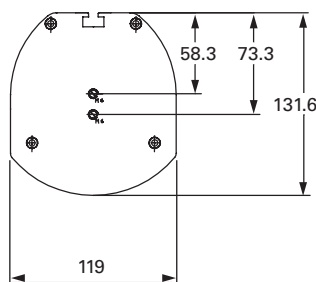
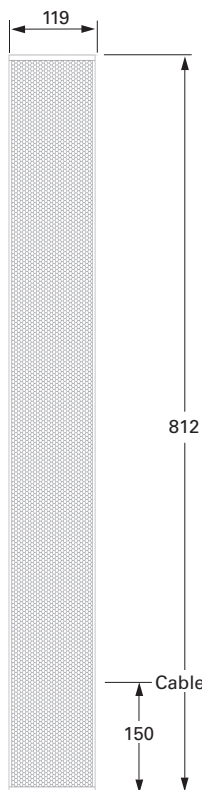


CHORUS- I Overview

Our new, intelligent series of line arrays comes in active or passive flavours. Thanks to the elegant slim-line design and the customizable color (RAL), they integrate seamlessly into any given environment. The full-aluminum body and front grid provide maximum protection against dust and splash water, complying with IP54 standard. High quality components, such as the acoustically perfect-matched premium neodym-drivers produce accurate and natural sound (music and speech).

Our active line arrays employ the latest DSP-technology, allowing beam steering and sound shaping for optimal intelligibility in even the most demanding locations.

	Passive	Active	Width mm	Height mm	Depth mm
GM-6820	•		95	590	97
GM-6840	•		95	940	97
GM-6940-P	•		119	810	132
GM-6960-P	•		119	1612	132
GM-6940-A		•	119	812	132
GM-6960-A		•	119	1612	132
GM-6980-A		•	119	3212	132



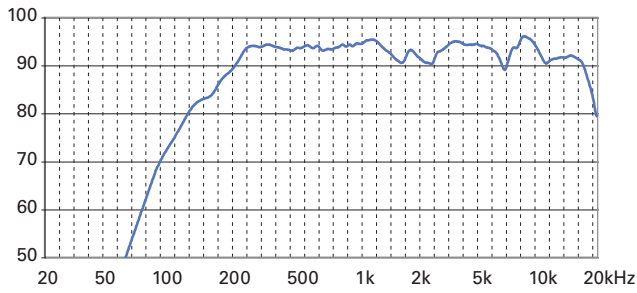
Technical Data

Loudspeaker type	passive, 2-way system
Drivers	8 × 80 mm Wideband Loudspeaker, water resistant, neodym magnet, 4 × Tweeter 20mm
Frequency response (-10dB)	144 – 19'160 Hz
Protective function	Highpassfilter
Sensitivity (1W/1m)	92.7 dB
Coverage angle at -6dB	130° (h) × 12°(v) @ 2KHz
Max. sound level (at 1m)	114.9 dB
Power adoption 100V	10 / 20 / 40 W
Impedance 100V	1'000 / 500 / 250 Ω
Power Rating (8Ω)	80 W
Dimensions (w x h x d)	119 × 812 × 132mm
Weight	8.4 kg
Material	Aluminum
Mounting parts	Brackets
Default color	RAL 9016
Customized colours	all RAL-codes available
IP Class	IP54

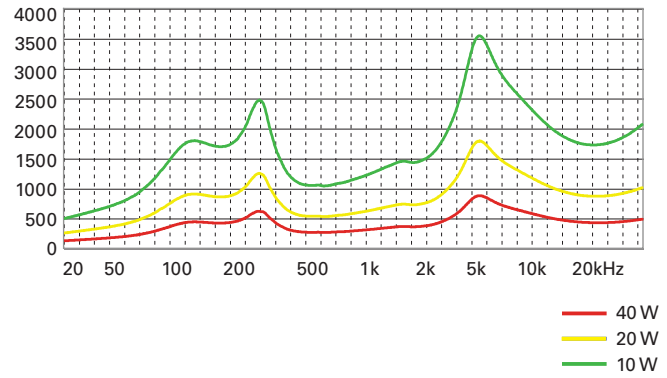
Important features

- **Passive 2-way line array, developed for difficult venues, such as churches, conference rooms, public areas and outdoor applications.**
- **Integrated 100V-transformer**
- **Easy wall-mounting thanks to special brackets**
- **Full-aluminum body in slim-line design**
- **Very rich on natural sound reproduction for both speech and music**
- **IP54 compliant for outdoor usage**

Frequency response

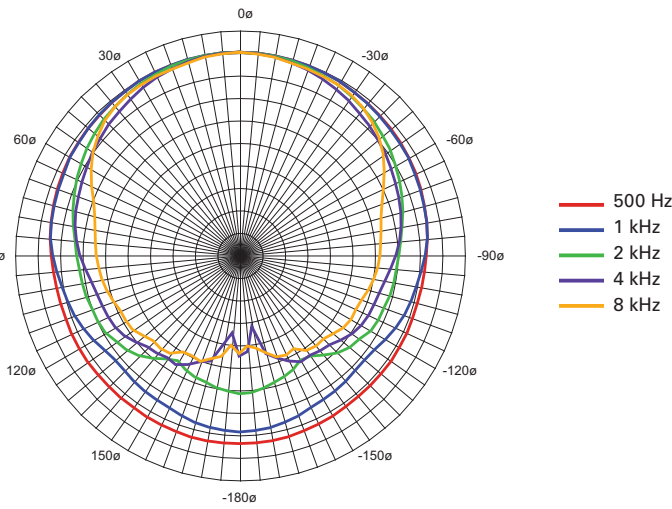


Impedance

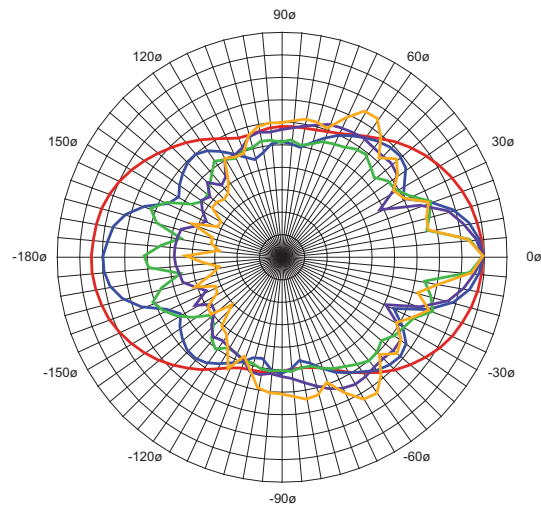


Polar diagram

Horizontal

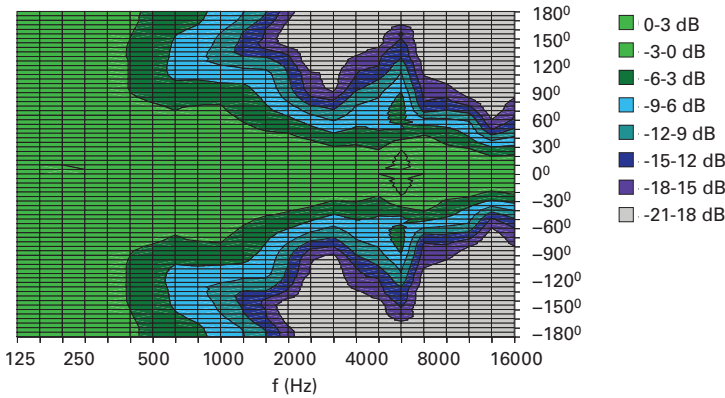


Vertical

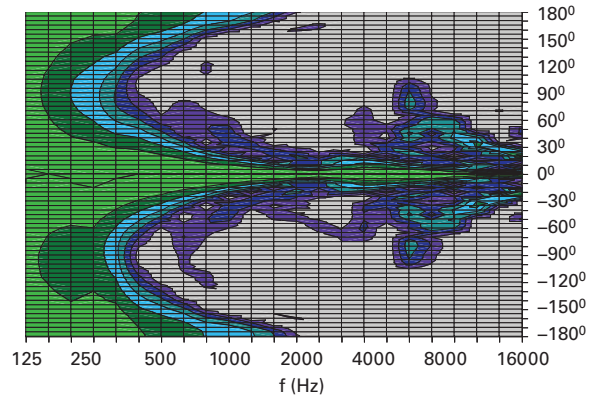


Dispersion

Horizontal dispersion characteristic



Vertical dispersion characteristic



g+m elektronik ag
CH-9245 Oberbüren
T +41 (0)71 955 90 10
F +41 (0)71 955 90 20

Regional Swiss Offices:
5504 Othmarsingen T +41 (0)62 896 02 08 F +41 (0)62 896 02 68
1090 La Croix (Lutry) T +41 (0)21 791 63 06 F +41 (0)21 791 63 08
www.gm-elektronik.ch adm@gm-elektronik.ch

Subsidiary Companies abroad:
g+m elektroakustik GmbH D-64646 Heppenheim
g+m électronique S.A.R.L. F-21202 Beaune
g+m audio-technologie B.V. NL-4824 AT Breda