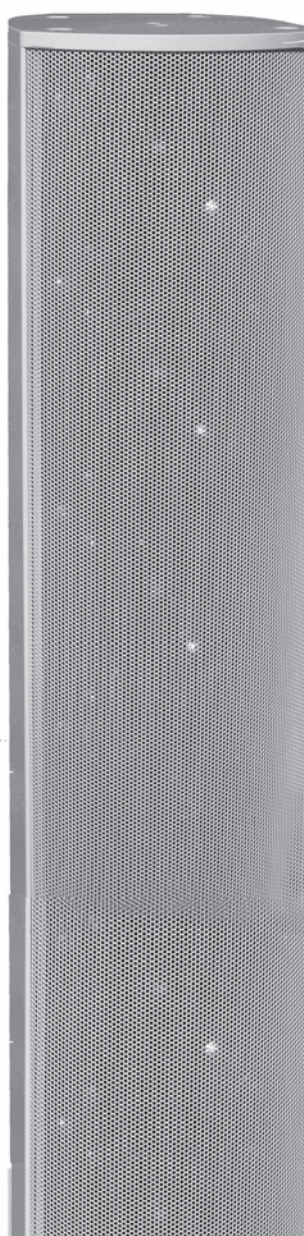
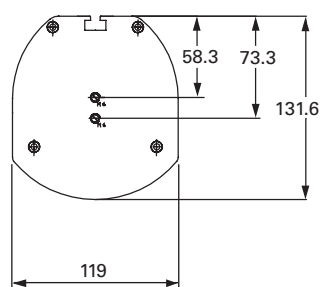
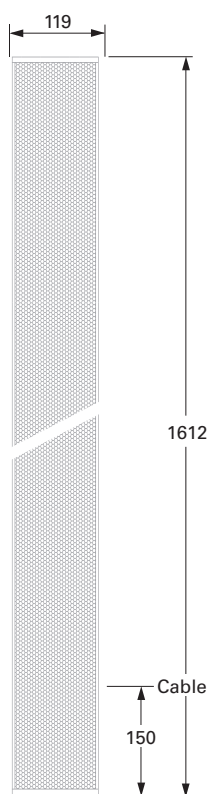


## CHORUS- I Overview

Our new, intelligent series of line arrays comes in active or passive flavours. Thanks to the elegant slim-line design and the customizable color (RAL), they integrate seamlessly into any given environment. The full-aluminum body and front grid provide maximum protection against dust and splash water, complying with IP54 standard. High quality components, such as the acoustically perfect-matched premium neodym-drivers produce accurate and natural sound (music and speech).

Our active line arrays employ the latest DSP-technology, allowing beam steering and sound shaping for optimal intelligibility in even the most demanding locations.

	Passive	Active	Width mm	Height mm	Depth mm
GM-6820	•		95	590	97
GM-6840	•		95	940	97
GM-6940-P	•		119	810	132
GM-6960-P	•		119	1612	132
GM-6940-A		•	119	812	132
GM-6960-A		•	119	1612	132
GM-6980-A		•	119	3212	132



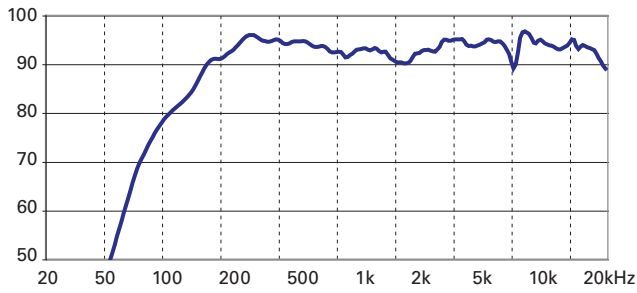
## Technical Data

Loudspeaker type	passive, 2½-way system
Drivers	16 × 80 mm Wideband Loudspeaker, water resistant, Neodym magnet, 8 × Tweeter 20 mm
Frequency response (-10dB)	117 – 20'000 Hz
Protective function	Highpassfilter
Sensitivity (1W/1m)	94.0 dB
Coverage angle at -6dB	120° (h) × 17°(v) @ 2KHz
Max. sound level (at 1m)	118.5 dB
Power adoption 100V	20 / 40 / 80 W
Impedance 100V	500 / 250 / 125 Ω
Power Rating (8Ω)	160 W
Dimensions (w x h x d)	119 × 1612 × 132mm
Weight	16.8 kg
Material	Aluminum
Mounting parts	Brackets
Default color	RAL 9016
Customized colours	all RAL-codes available
IP Class	IP54

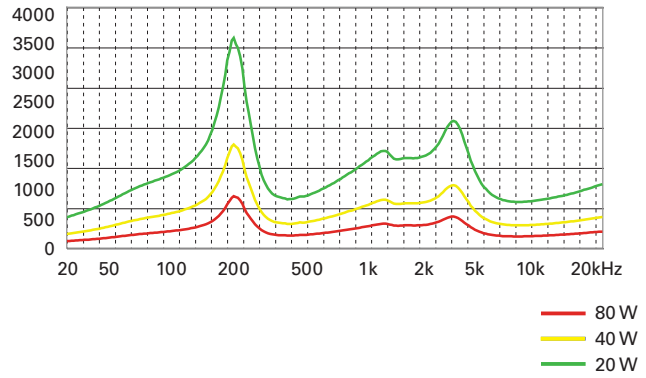
## Important features

- **Passive 2½-way line array, developed for difficult venues, such as churches, conference rooms, public areas and outdoor applications.**
- **Integrated 100V-transformer**
- **Easy wall-mounting thanks to special brackets**
- **Full-aluminum body in slim-line design**
- **Very rich on natural sound reproduction for both speech and music**
- **IP54 compliant for outdoor usage**

Frequency response

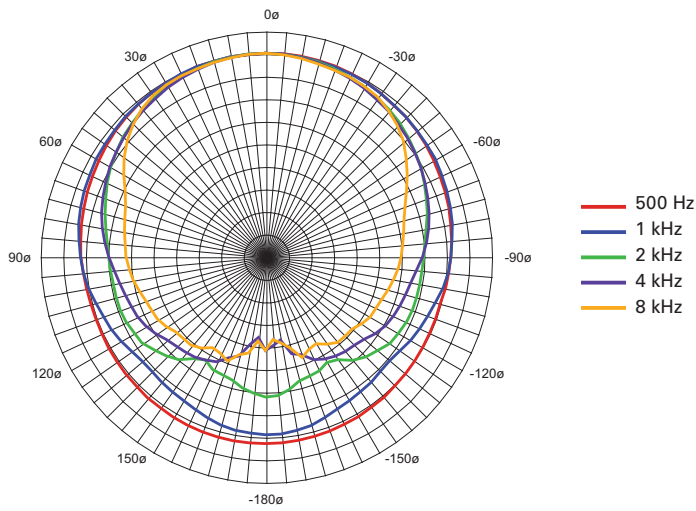


Impedance

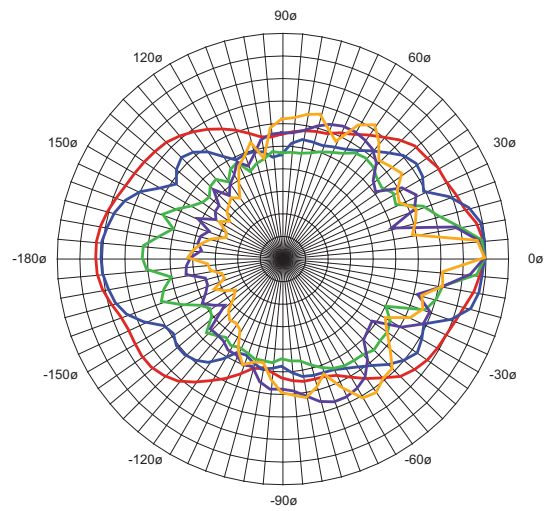


Polar diagram

Horizontal

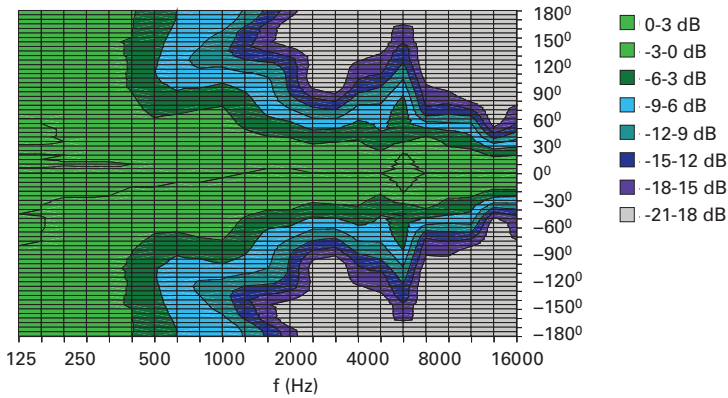


Vertical



Dispersion

Horizontal dispersion characteristic



Vertical dispersion characteristic

